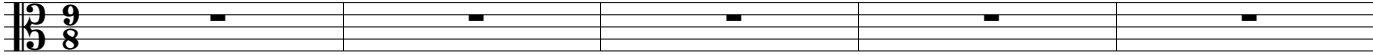


# The Send Off, The End

Jeremy Rawson

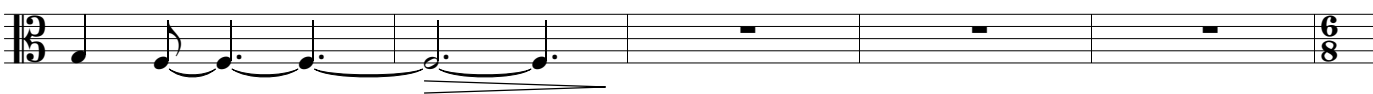
Slowly (♩. = c.40)



6 *con sord.*



10

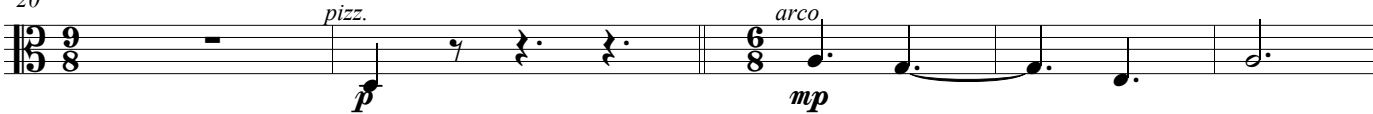


15 *senza sord.*



20

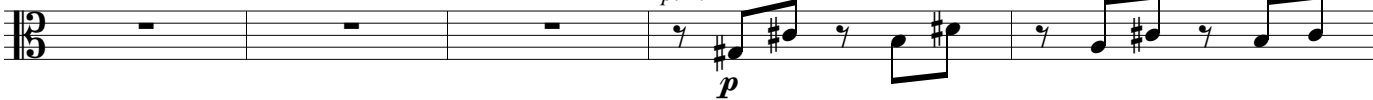
A shade faster



25



31



36



42

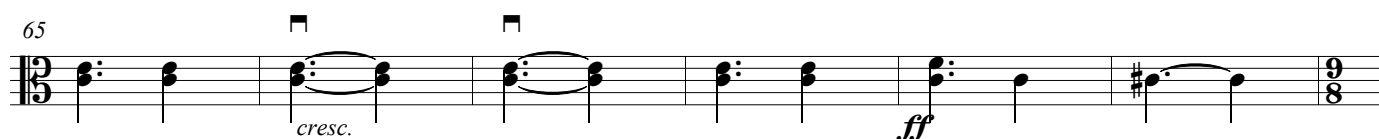
Tempo I



47

*arco, con sord.*





111

Tempo I

Viola

*con sord.*  
*mp*

117

122

*p*

127

*pp*

131

Detailed description of the musical score: The score is for a Viola part, measures 111 to 131. It begins at measure 111 with a 13/8 time signature. Measure 111 has a quarter note, a quarter rest, and a quarter note. Measure 112 is a whole rest. Measure 113 is a 6/8 time signature with a whole rest. Measure 114 is a whole rest. Measure 115 is a whole rest. Measure 116 has a quarter note with a sharp, a quarter note, and a quarter note. Measure 117 has a quarter note, a quarter note, and a quarter note. Measure 118 has a quarter note with a sharp, a quarter rest, and a quarter rest. Measure 119 is a 6/8 time signature with a whole rest. Measure 120 is a whole rest. Measure 121 has a quarter note with a flat, a quarter note, and a quarter note. Measure 122 has a quarter note, a quarter note, and a quarter note. Measure 123 has a quarter note, a quarter note, and a quarter note. Measure 124 has a quarter note, a quarter note, and a quarter note. Measure 125 has a quarter note, a quarter note, and a quarter note. Measure 126 has a quarter note, a quarter note, and a quarter note. Measure 127 has a quarter note, a quarter note, and a quarter note. Measure 128 has a quarter note, a quarter note, and a quarter note. Measure 129 has a quarter note, a quarter note, and a quarter note. Measure 130 has a quarter note, a quarter note, and a quarter note. Measure 131 has a quarter note, a quarter note, and a quarter note. The score includes dynamics *mp*, *p*, and *pp*, and a *con sord.* marking. A 'Tempo I' instruction is present at the beginning.